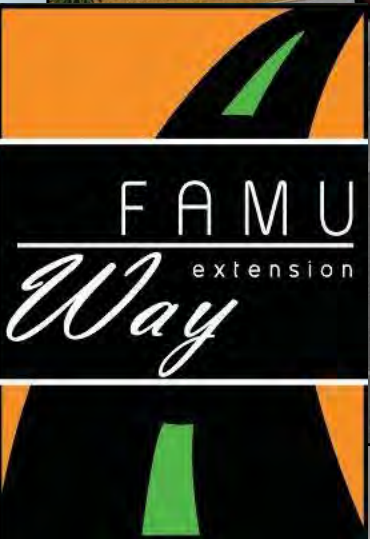


FAMU Way Extension Project Update



Community Engagement

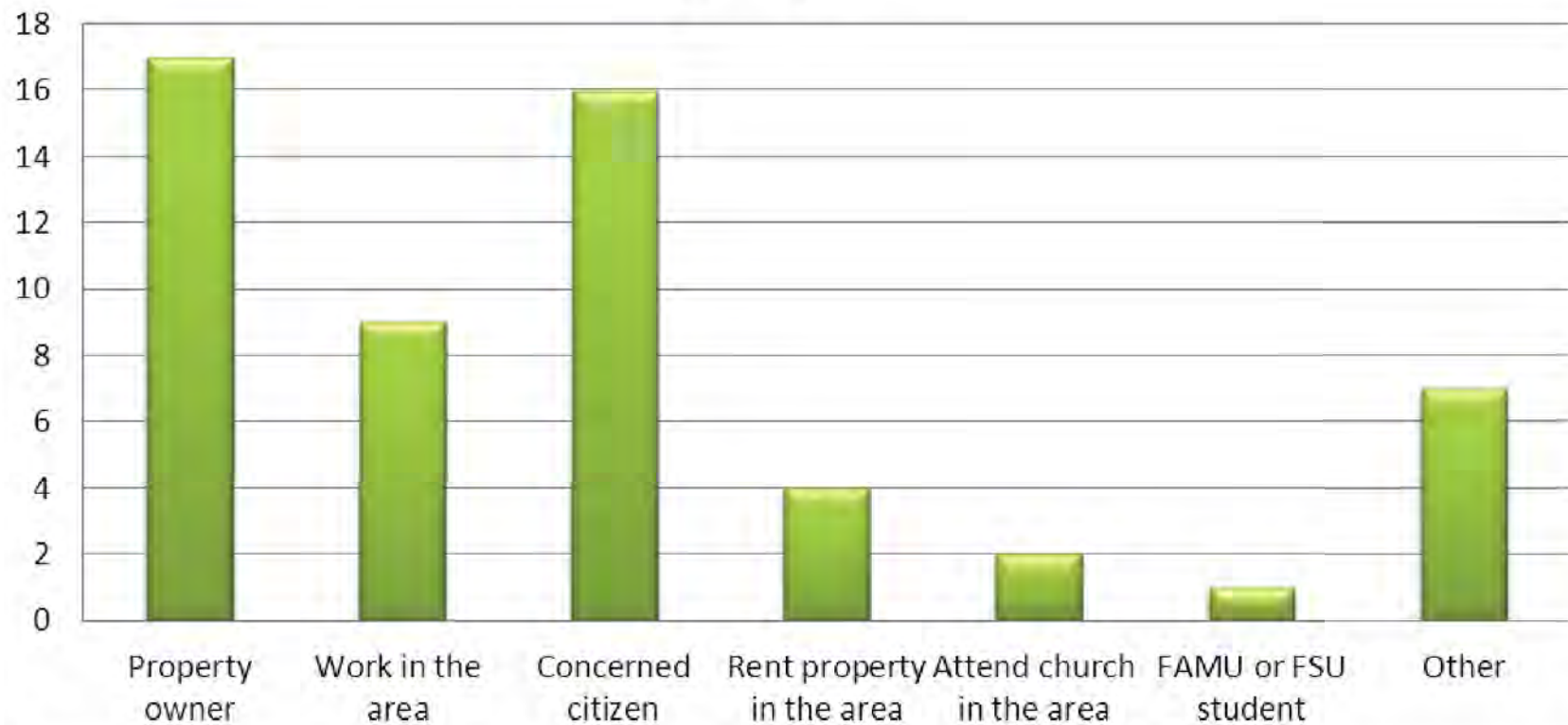


April 29 – Community Advisory Board Meeting

May 10 - Community Meeting

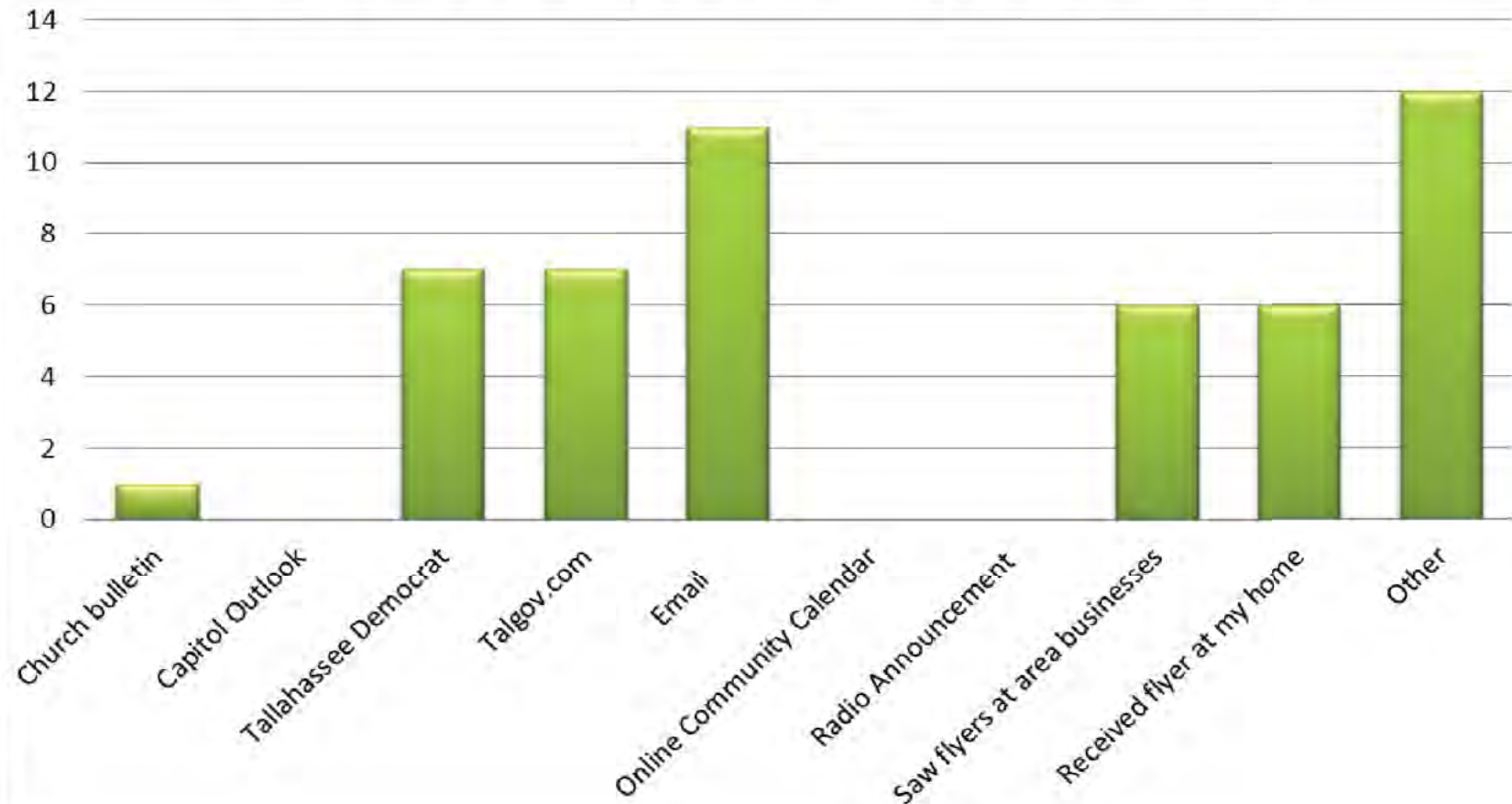
Community Survey Results

How would you describe your interest in this project?



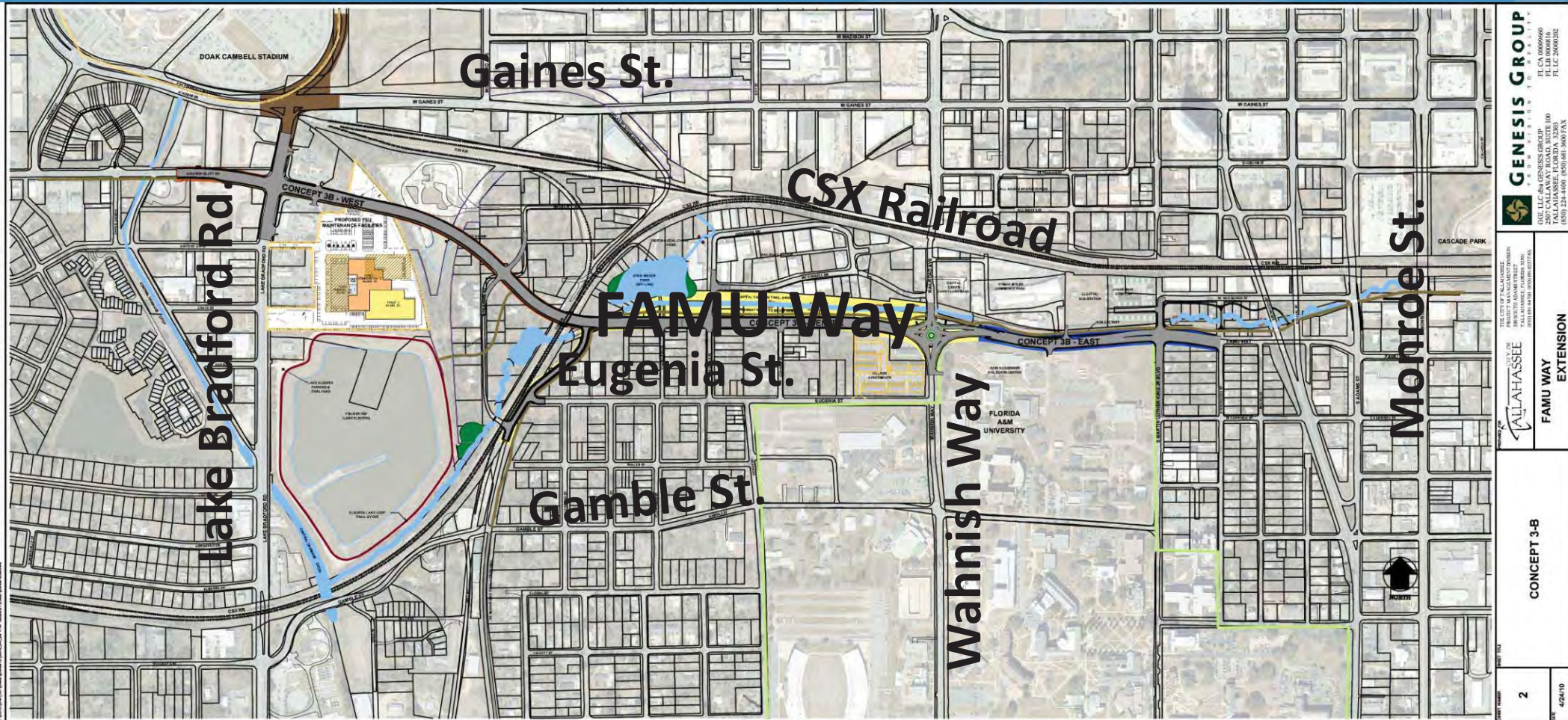
Community Survey Results

How did you hear about this public meeting?



FAMU Way Preferred Alternative

Alternate 3B

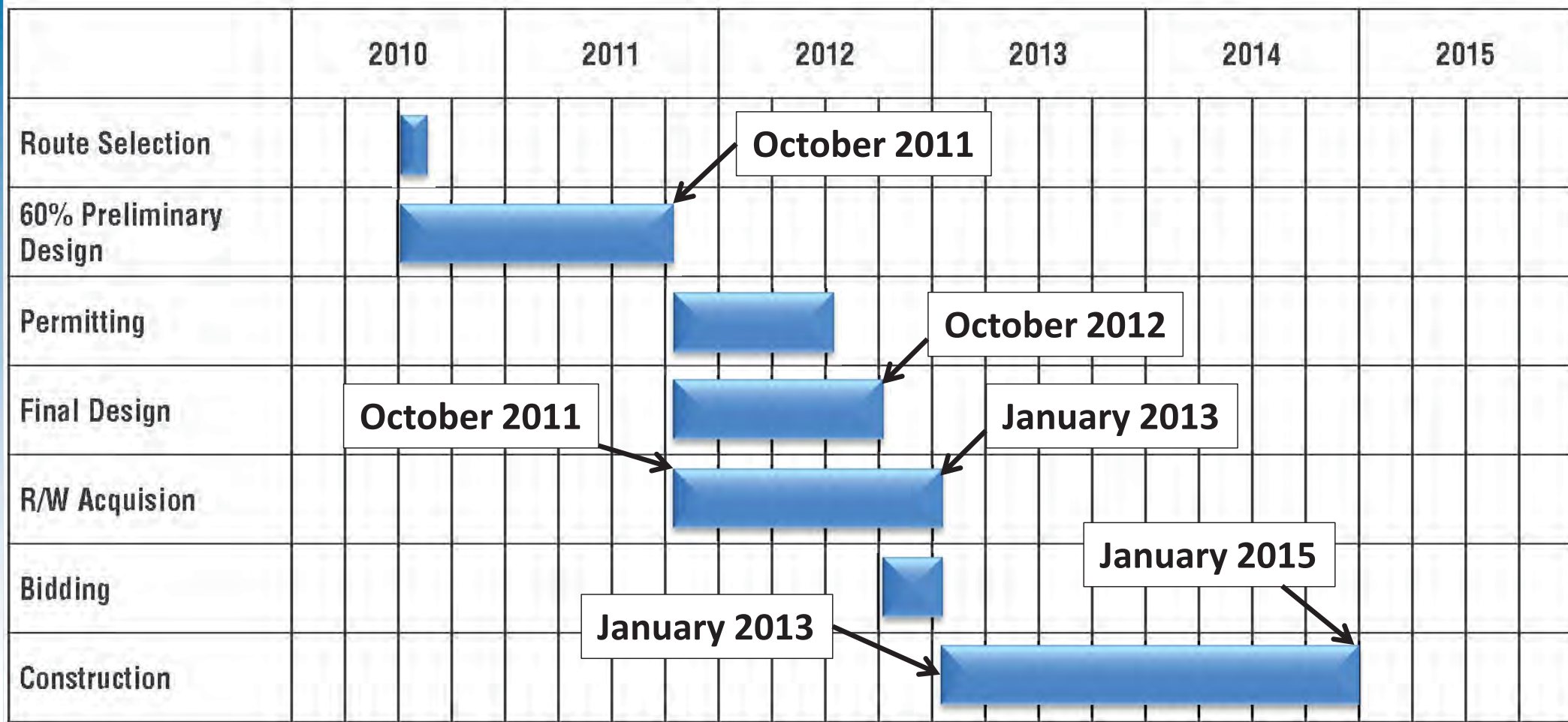


 GENESIS GROUP <small>INCORPORATED IN FLORIDA</small> 2507 CALHOUN ROAD, SUITE 100 TALLAHASSEE, FLORIDA 32302 TEL: 904.877.8800 FAX: 904.877.8801	
 CITY OF TALLAHASSEE <small>PLANNING AND COMMUNITY DEVELOPMENT DEPARTMENT</small> 100 SOUTH ALBANY STREET TALLAHASSEE, FLORIDA 32301 TEL: 904.644.2200 FAX: 904.644.2201	
FAMU WAY EXTENSION	
CONCEPT 3-B	
2	4/24/10

- Sidewalks
- Multi-Use Path
- Bike Lanes
- On-Street Parking
- Linear Park
- Landscaping
- Hardscaping



Schedule



Community Discussion Point







Intersection Options

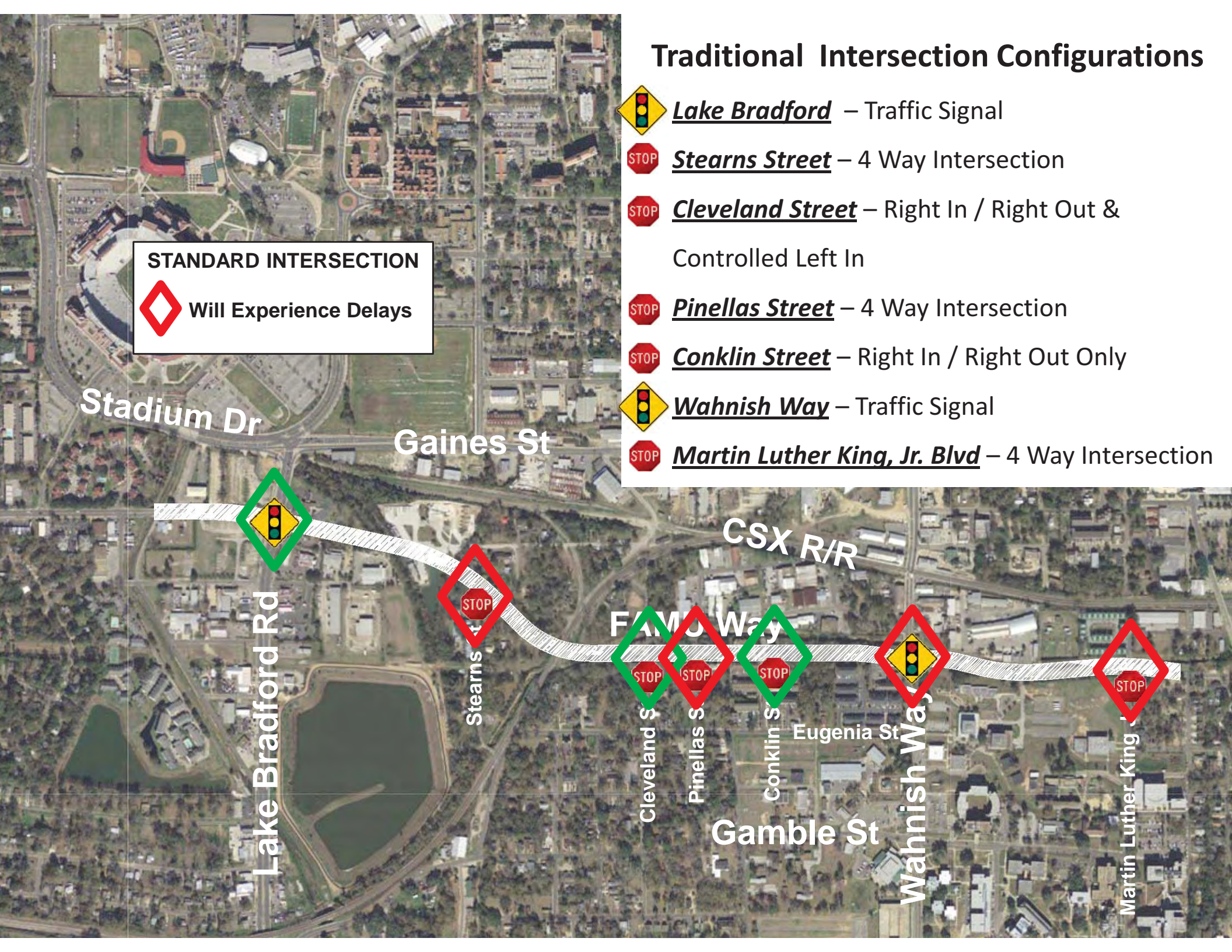
Traditional Intersection



Traditional Intersection Configurations

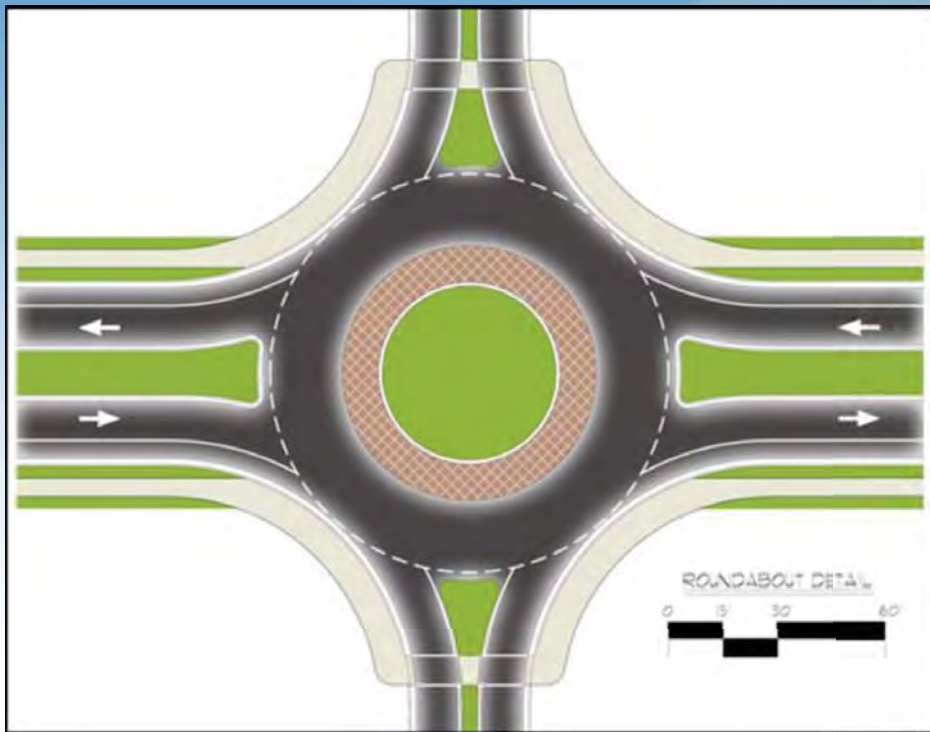
-  **Lake Bradford** – Traffic Signal
-  **Stearns Street** – 4 Way Intersection
-  **Cleveland Street** – Right In / Right Out & Controlled Left In
-  **Pinellas Street** – 4 Way Intersection
-  **Conklin Street** – Right In / Right Out Only
-  **Wahnish Way** – Traffic Signal
-  **Martin Luther King, Jr. Blvd** – 4 Way Intersection

STANDARD INTERSECTION
 Will Experience Delays



Roundabout Intersection Design

Benefits



- Reduces Congestion
- Complements Community Values
- Improves Safety
- Reduces Pollution and Fuel Use

Roundabout Intersection Configurations

-  **Lake Bradford** – Traffic Signal
-  **Stearns Street** – 4 Leg Roundabout
-  **Cleveland Street** – Right In / Right Out & Controlled Left In
-  **Pinellas Street** – 4 Leg Roundabout
-  **Conklin Street** – Right In / Right Out Only
-  **Wahnish Way** – 4 Leg Roundabout
-  **Martin Luther King, Jr. Blvd** – 4 Leg Roundabout

Round About Alternative



Improved Traffic Flow

Stadium Dr

Gaines St



Lake Bradford Rd



Stearns St



Cleveland St



Pinellas St



Conklin St



Eugenia St



Wahnish Way

Gamble St



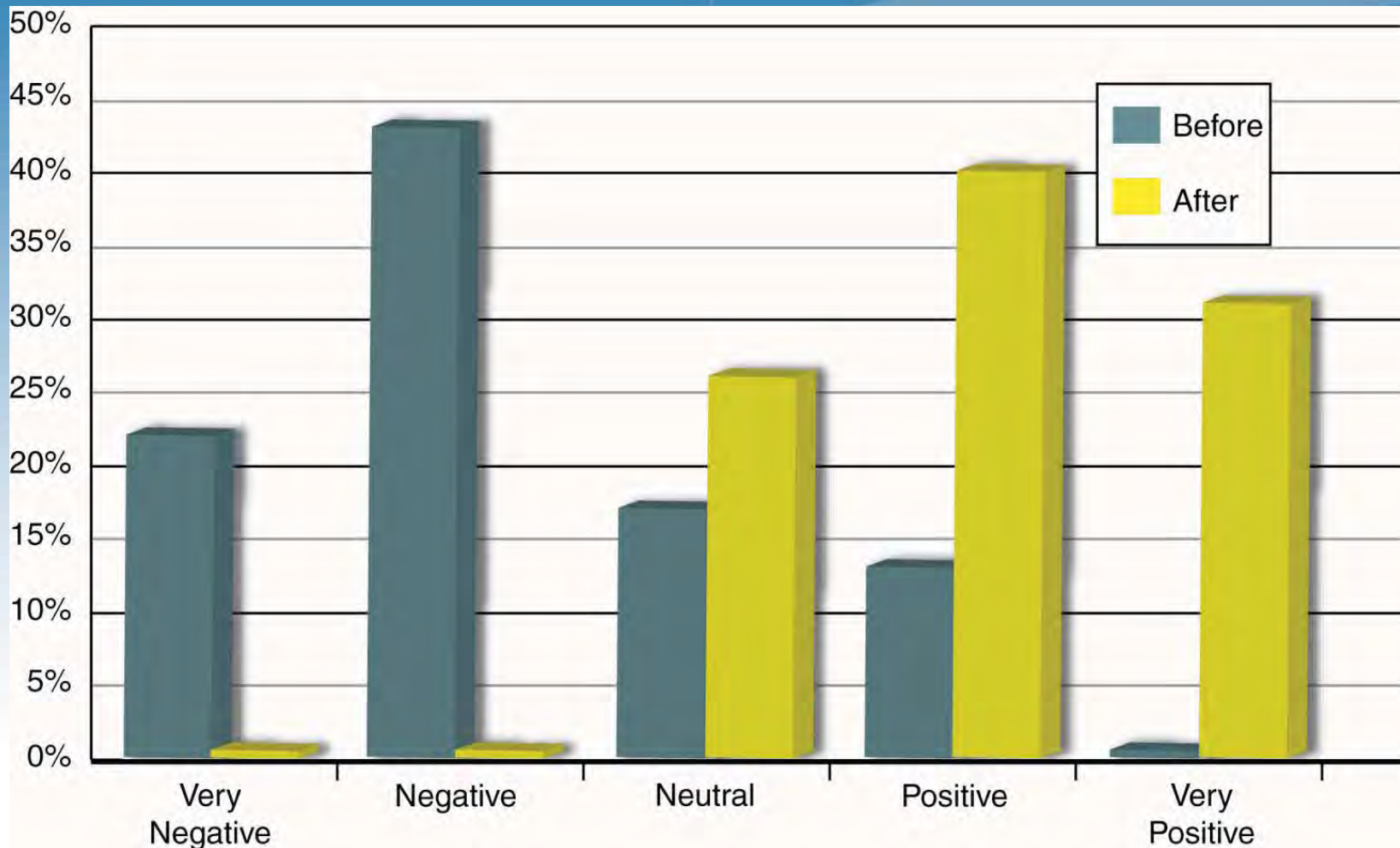
Martin Luther King Jr

Roundabout Intersection



Public Attitude Towards Roundabouts

(Before and After Construction)



Source: U.S. Department of Transportation
Federal Highway Administration – NCHRP Synthesis 264



Creates a Sense of Place



Creates a Sense of Place



Creates a Sense of Place



Creates a Sense of Place



Driveway Connections



Roundabout

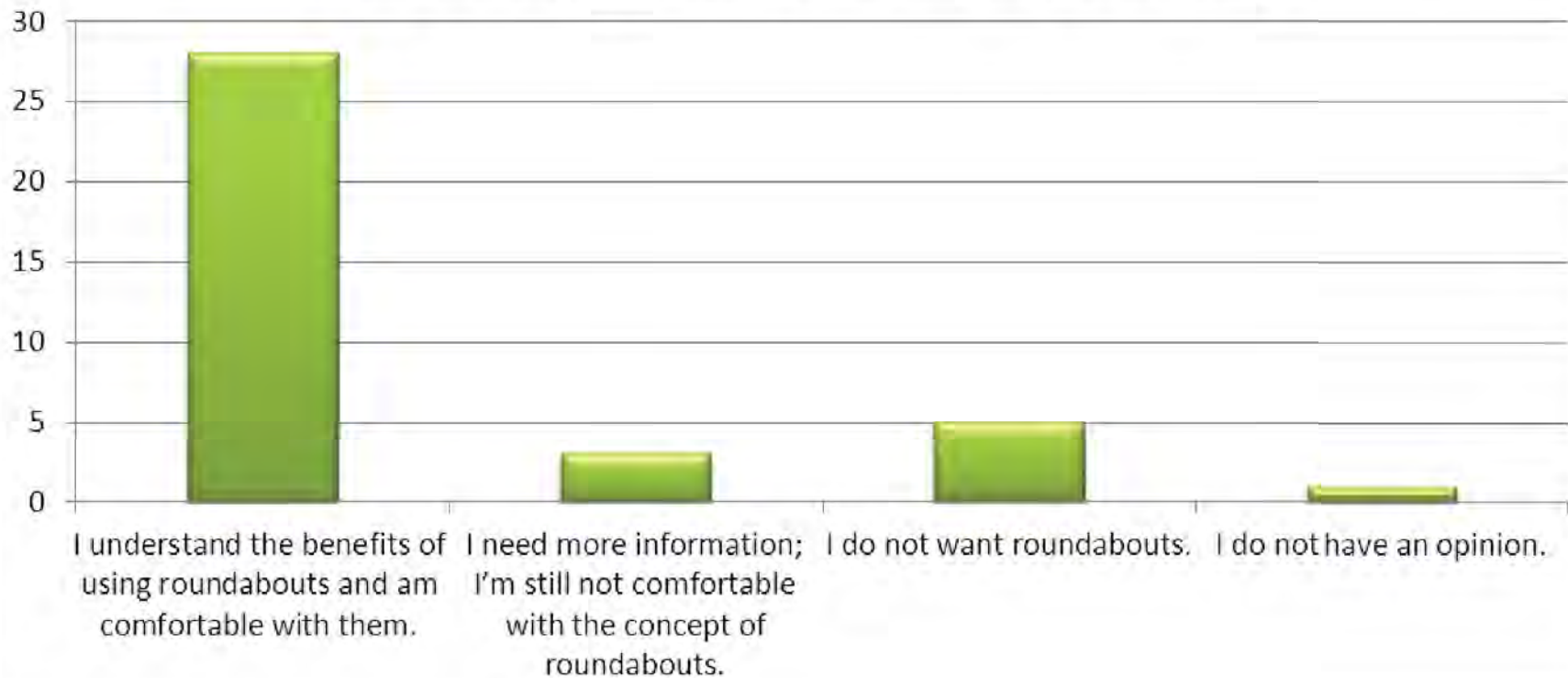


Traditional

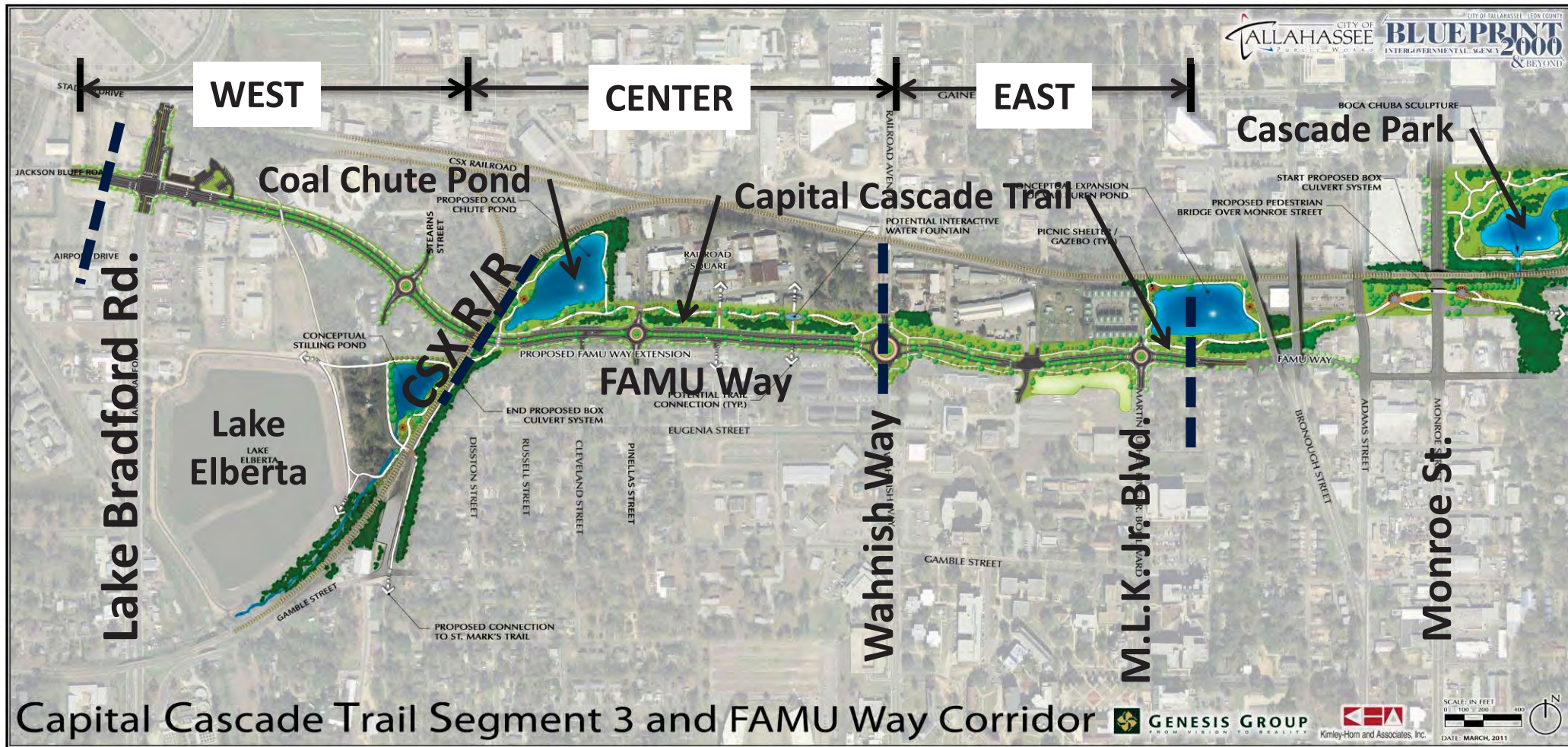


Community Survey Results

The City is considering using single-lane roundabouts at some key intersections along FAMU Way to help with traffic flow. After hearing the presentation today, please indicate your comfort level with the use of roundabouts.



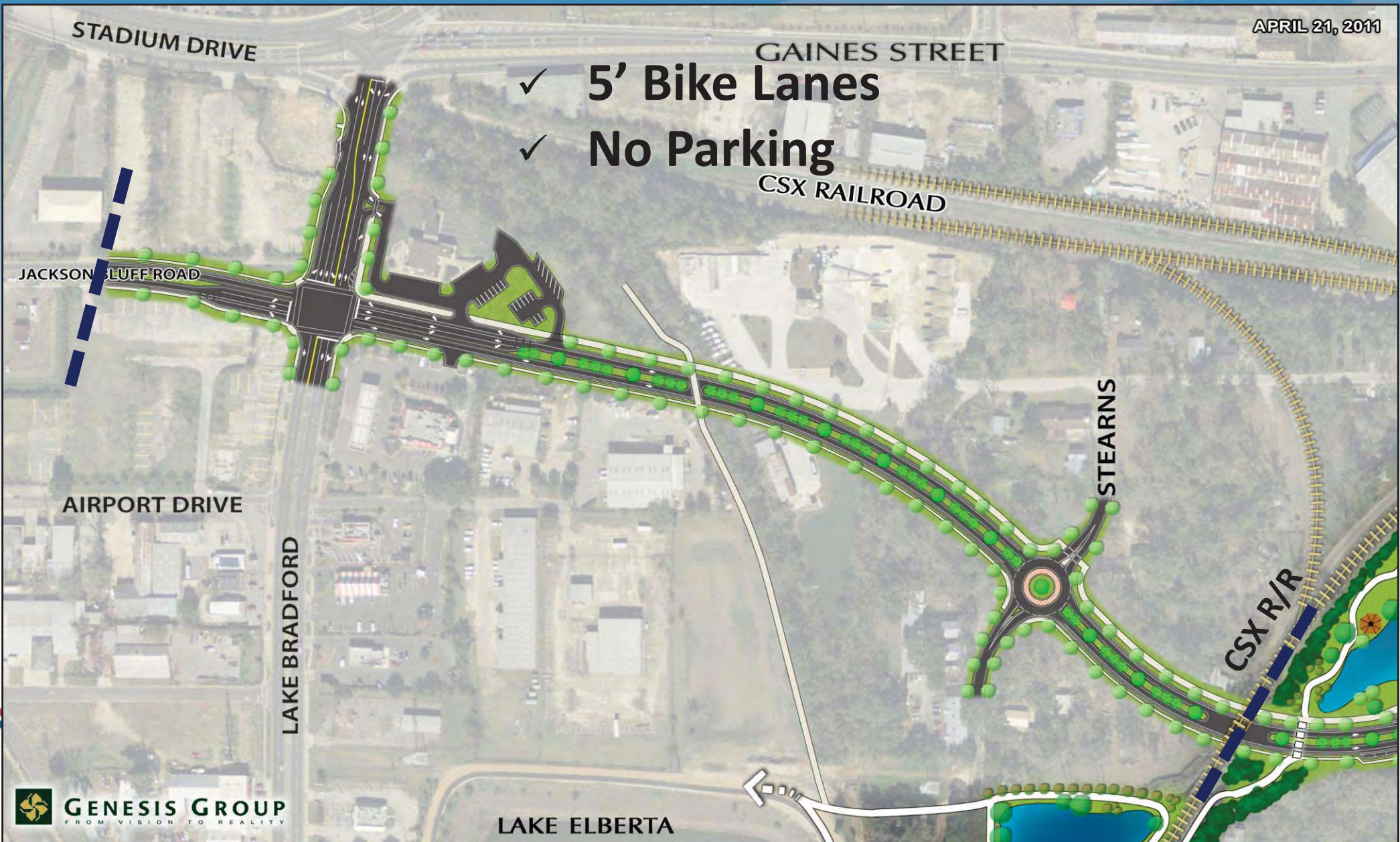
FAMU Way & Capital Cascade Trail



West Segment

APRIL 21, 2011

- ✓ 5' Bike Lanes
- ✓ No Parking





West Segment – Aerial Perspective



West Segment – Aerial Perspective



 GENESIS GROUP
FROM VISION TO REALITY

West Segment – Sidewalk Perspective

Center Segment

APRIL 21, 2011





 GENESIS GROUP

Center Segment – Aerial Perspective



Conklin St.

McDonnell Dr.

GENESIS GROUP

Center Segment – Aerial Perspective



 GENESIS GROUP
FROM VISION TO REALITY

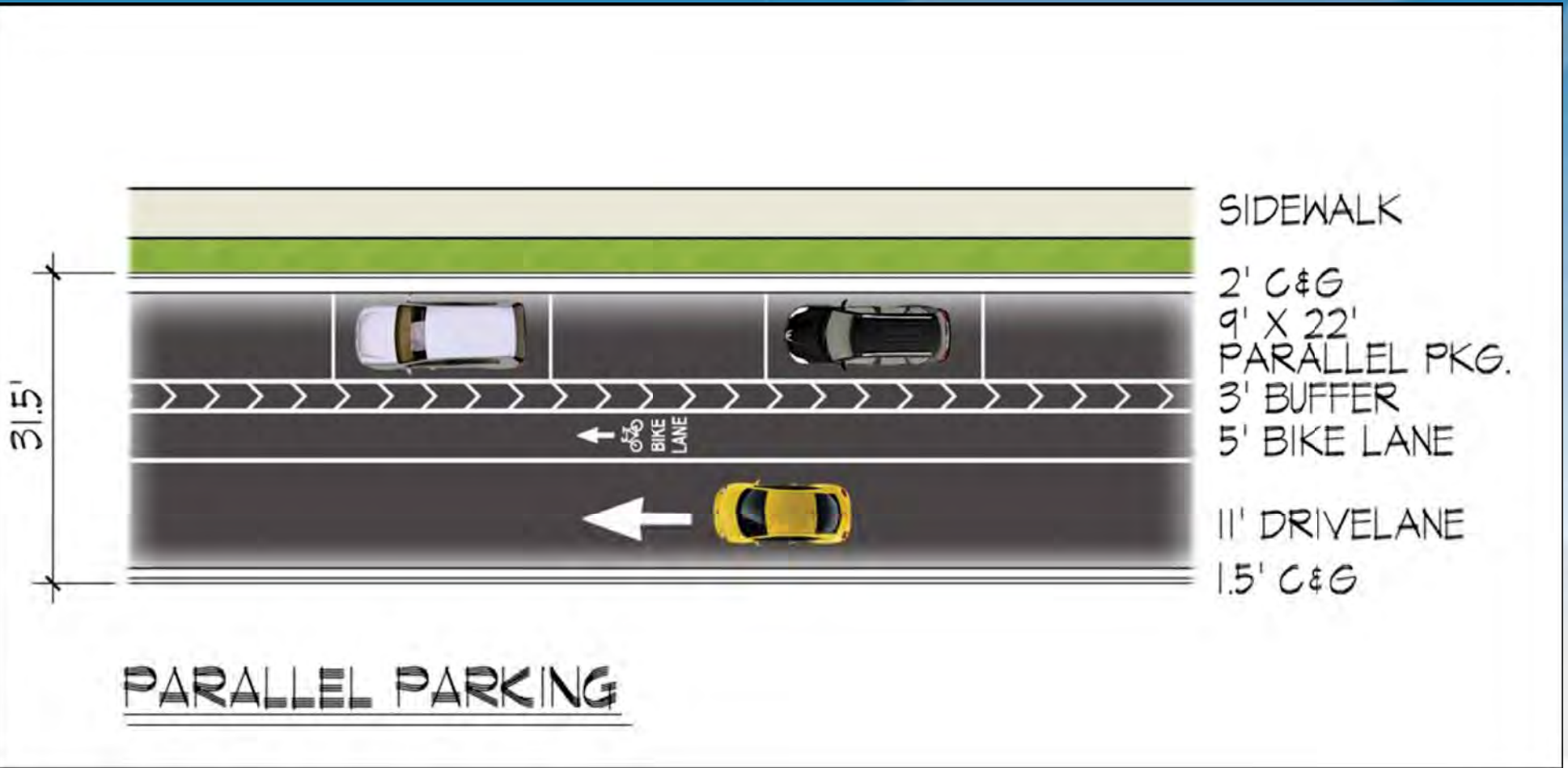
Center Segment – Sidewalk Perspective

Community Discussion Point

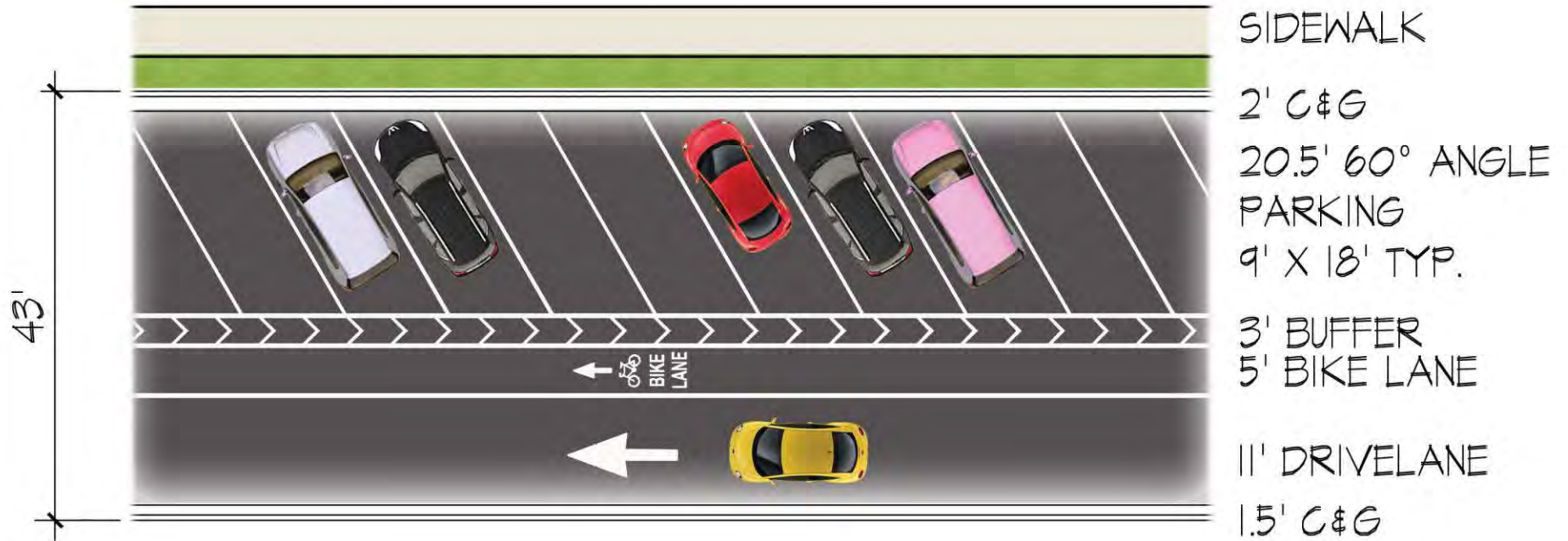


Parking Options

Parallel Parking Option

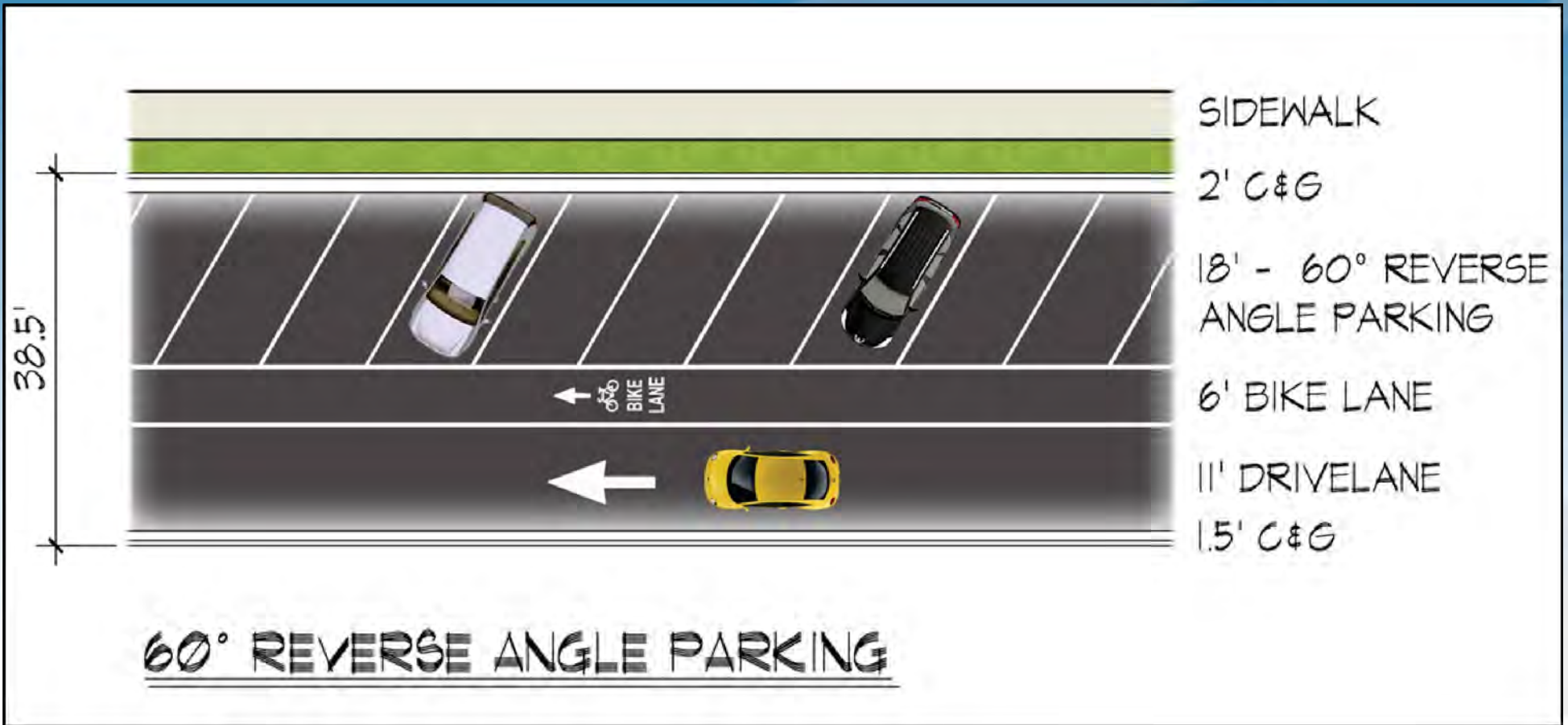


Pull-In Parking Option



60° ANGLE PARKING

Back- In Parking Option



Back-In Parking Option



Source: City of Kelowna, British Columbia, Canada



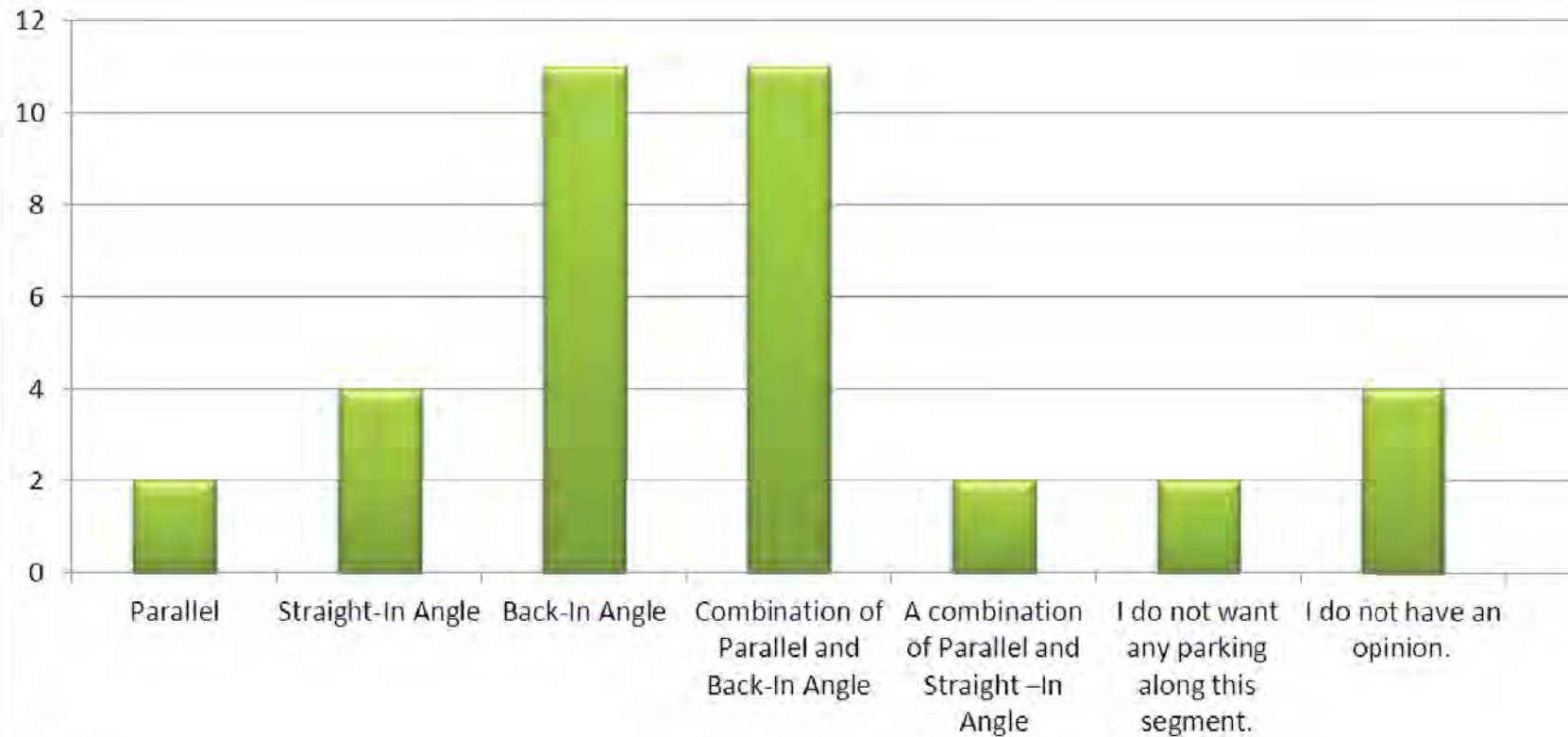
Source: T. Boulanger, Transportation Service, City of Vancouver, WA.

Back-In Parking Option



Community Survey Results

Several parking options are being considered for the portion of FAMU Way that runs between the railroad tracks and Wahnish Way near the proposed park area. Please indicate the kind of parking spaces that you feel will work best.



East Segment

APRIL 21, 2011





East Segment – Aerial Perspective



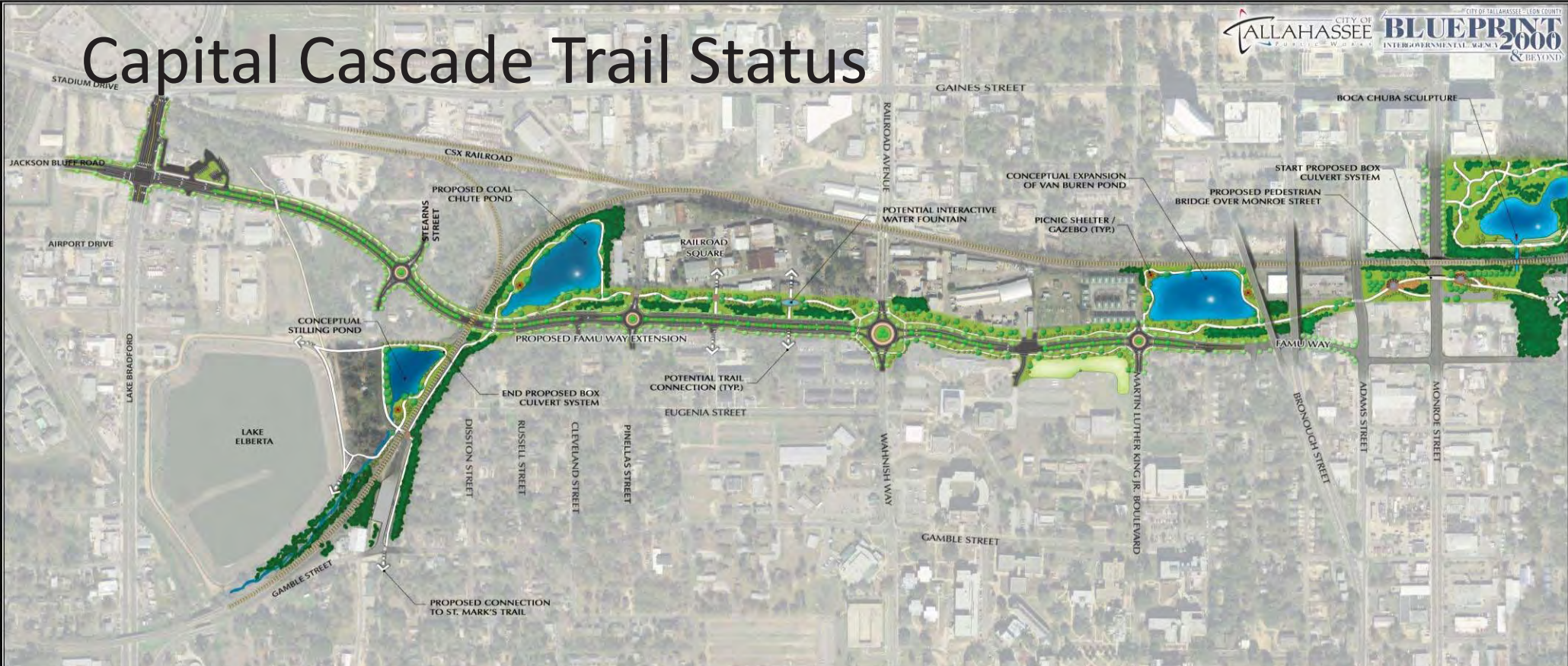
East Segment – Aerial Perspective



East Segment – Sidewalk Perspective



Capital Cascade Trail Status



Capital Cascade Trail Segment 3 and FAMU Way Corridor



■ Additional Opportunities for Community Input

- ❑ Sense of Place & Branding
- ❑ FAMU Greenway Design
 - ❑ Landscape & Hardscape
- ❑ Enhanced Crosswalks
- ❑ Roundabout Opportunities





For more information on the
FAMU Way Extension
Project and to view survey
results, please visit
www.Talgov.com/FAMUWay

